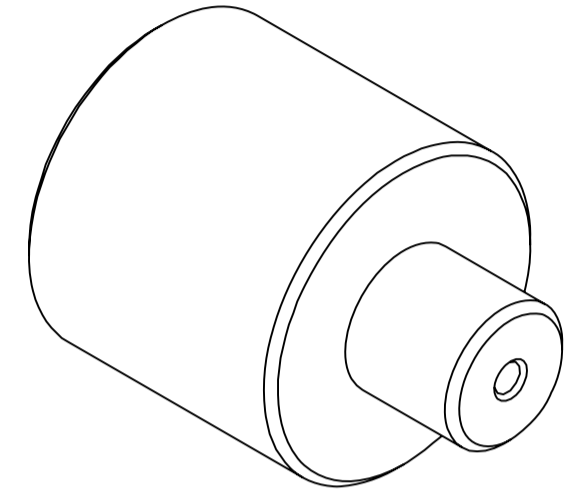
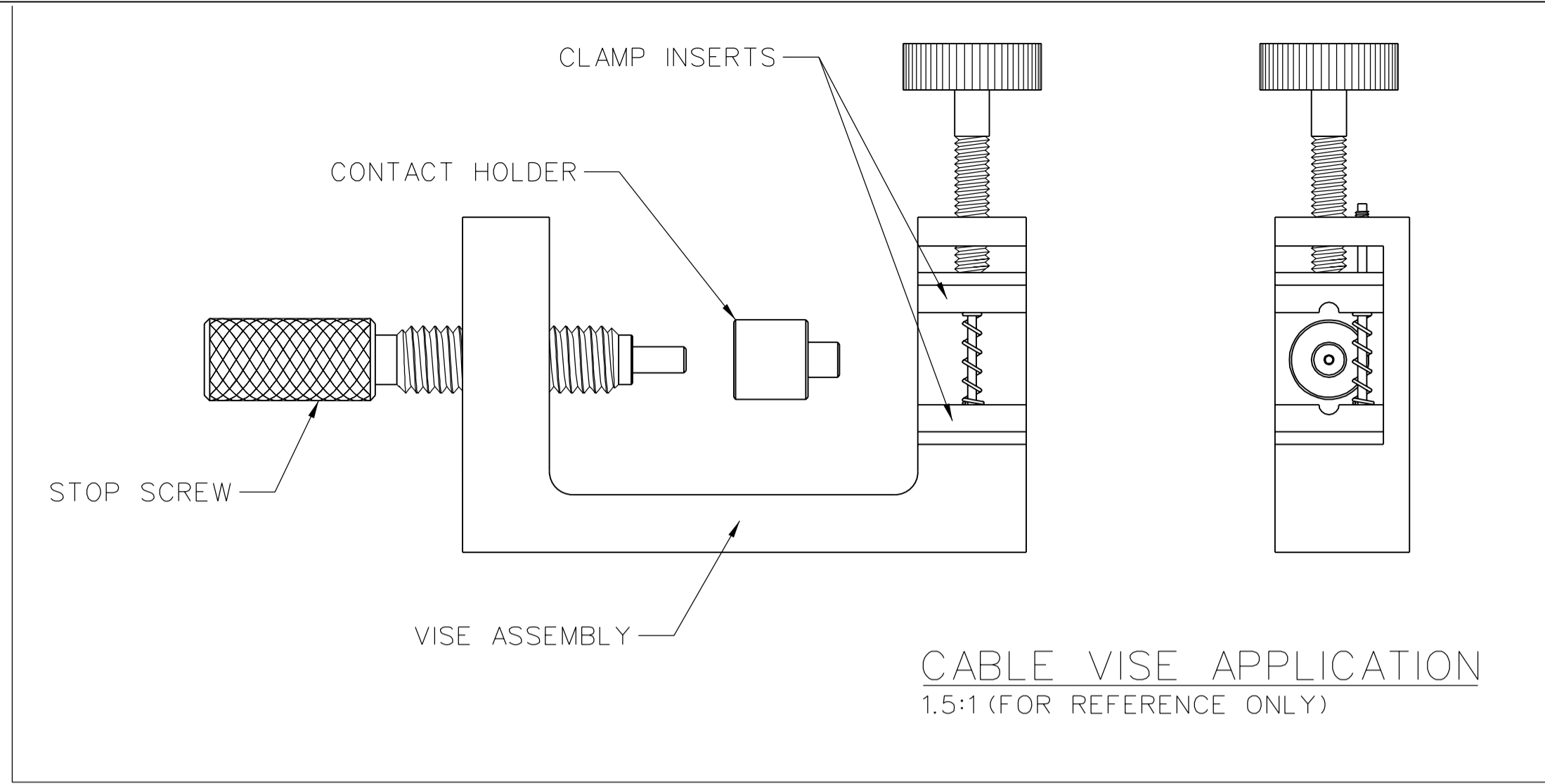


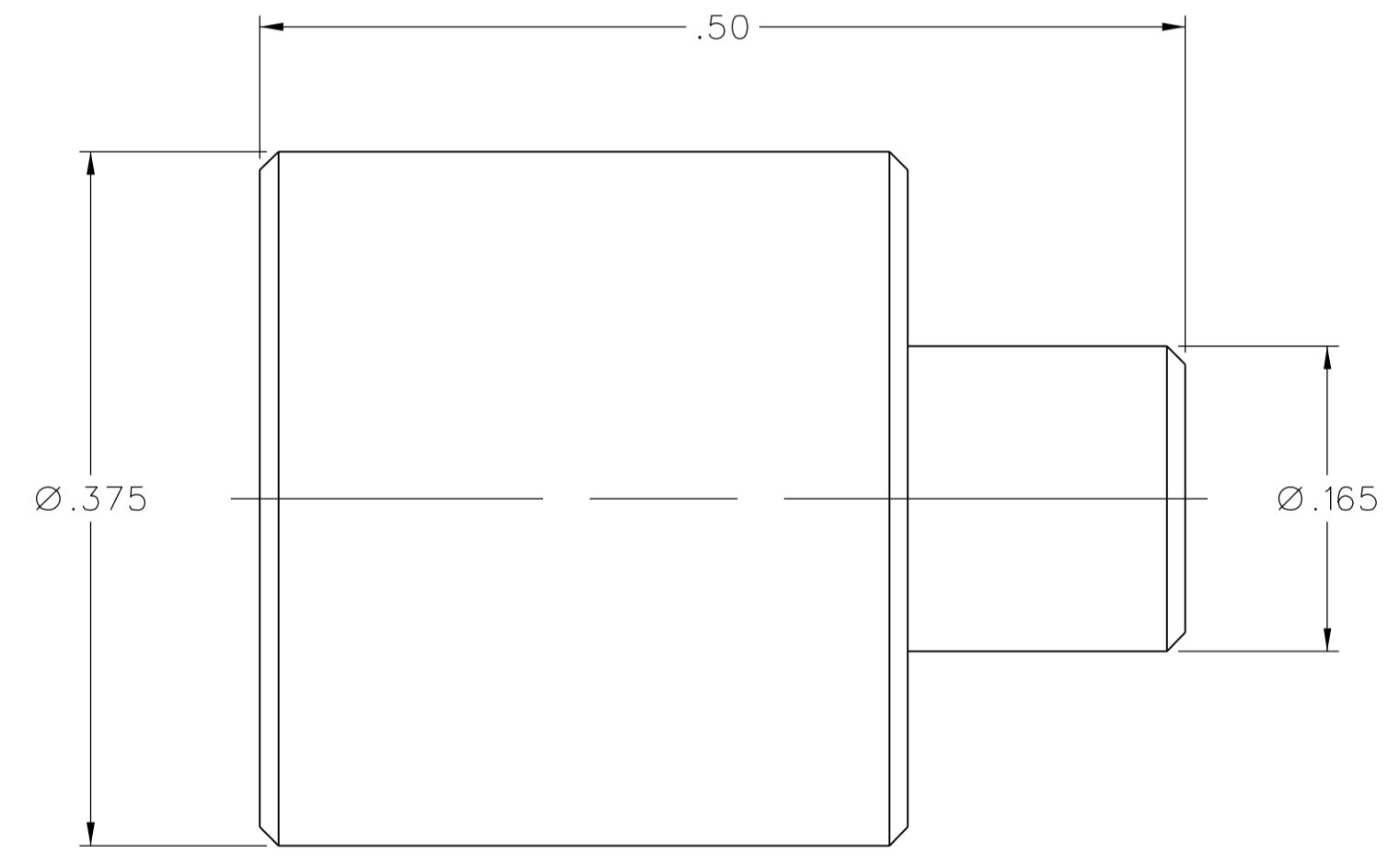
PART NUMBER 127-0000-902	MATERIAL STAINLESS STEEL PASSIVATED
-----------------------------	---



5:1



CABLE VISE APPLICATION
1.5:1 (FOR REFERENCE ONLY)



DRAWING NO. C - 127-0000-902	
0	REVISIONS
ENGINEERING RELEASE	
1	5-25-07 PAT JRK MJD PDW JCN 5-30-07 ECN 51050

CUSTOMER DRAWING

THIS DRAWING TO BE INTERPRETED
PER ASME Y 14.5M - 1994

"μSTATION"

COMPANY CONFIDENTIAL

TOLERANCE UNLESS OTHERWISE SPECIFIED		DRAWN BY PAT	DATE 4-13-07
DECIMALS	mm	CHECKED BY JRK	DATE 5-25-07
.XX REF	_____	APPROVED BY PDW	DATE 5-25-07
.XXX REF	_____	RELEASE DATE	5-30-07
MATL	_____	U/M	INCH
FINISH	_____	SCALE	10:1

cinch
CONNECTIVITY SOLUTIONS
a bel group

Cinch Connectivity Solutions
P.O. Box 1732
Waseca, MN 56093
1-800-247-8256

TITLE
SMP CABLED CONNECTOR
CONTACT HOLDER TOOL

SHEET
2 OF 2

DRAWING NO.
C - 127-0000-902