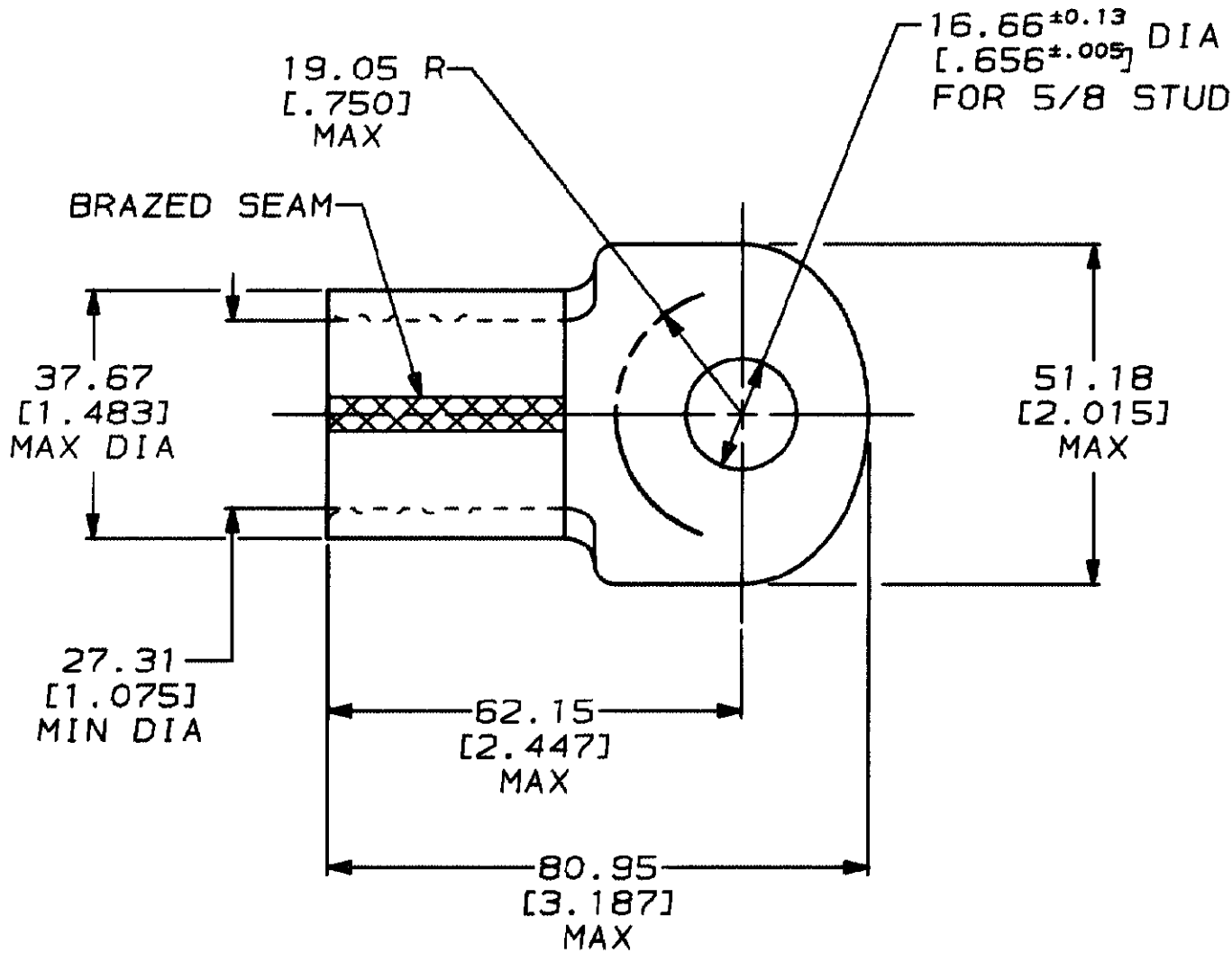


THIS DRAWING IS A CONTROLLED DOCUMENT FOR AMP INCORPORATED. IT IS SUBJECT TO CHANGE AND THE CONTROLLING ENGINEERING ORGANIZATION SHOULD BE CONTACTED FOR THE LATEST REVISION.

DRAWING MADE IN THIRD ANGLE PROJECTION

LOC	DIST	P	F	LTR	REVISIONS	DESCRIPTION	DATE	APPROVED
G	14				D	REVISED & REDRAWN PER G-5803	6/12/92	DKS / AJK



THIS DRAWING IS UNPUBLISHED. BY AMP INCORPORATED. ALL INTERNATIONAL RIGHTS RESERVED. © COPYRIGHT 19

322270
PART NO

DO NOT SCALE PRINT. UNLESS SPECIFIED DIMENSIONS IN mm [IN] TOLERANCES ON:
 2 PLC DEC ± 0.20 [.008]
 3 PLC DEC ± -
 ANGLES ± -
 MATERIAL
 COPPER ASTM B-152 ANNEALED
 FINISH
 TIN PLATE
 0.00254 [.000100] MIN THK PER MIL-T-10727

DR 6/12/92
 DK SCHRUN
 CHK 6/26/92
 RD HEIM
 APPD 6/26/92
 AJ KAUFMAN
 APPD 6/26/92
 CR RHOADS
 PRODUCT SPEC
 -
 APPLICATION SPEC
 -
 WEIGHT -

AMP AMP Incorporated
 Harrisburg, PA 17105-3608
 NAME
 TERMINAL, RING TONGUE, SOLISTRAND™
 WIRE SIZE: 253.0-304.0mm² [500-600] MCM
 SIZE **A** CAGE CODE 00779 DRAWING NO **C-322270**
 SCALE 1:1 SHEET 1 OF 1

AMP 1469-32 REV 3-92

12 JUN 1992 14:23:08 AMP26463 <US128A>DEPT1123>DWG1123>U.SOL1STRAND>U.MCM

CUSTOMER DRAWING