

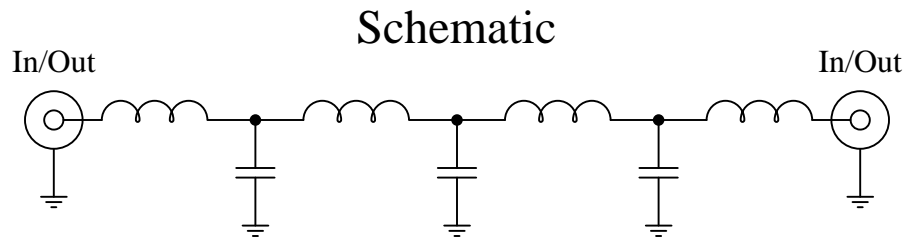
Low Pass Filter
50Ω SMA
7th Order



Part Number: CLPFL-0700

Low Pass Range
DC to 700MHz

New
Low Pass Filters



Features:

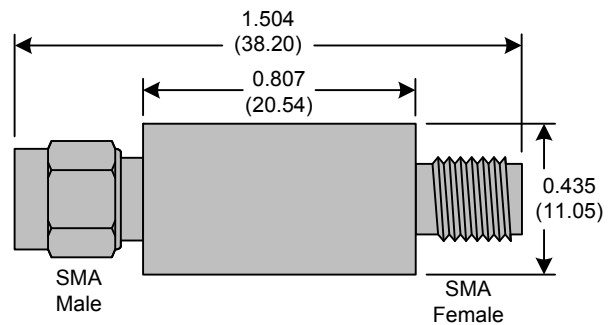
- 7th Order Butterworth Response
- 50Ω SMA Connectors

Applications:

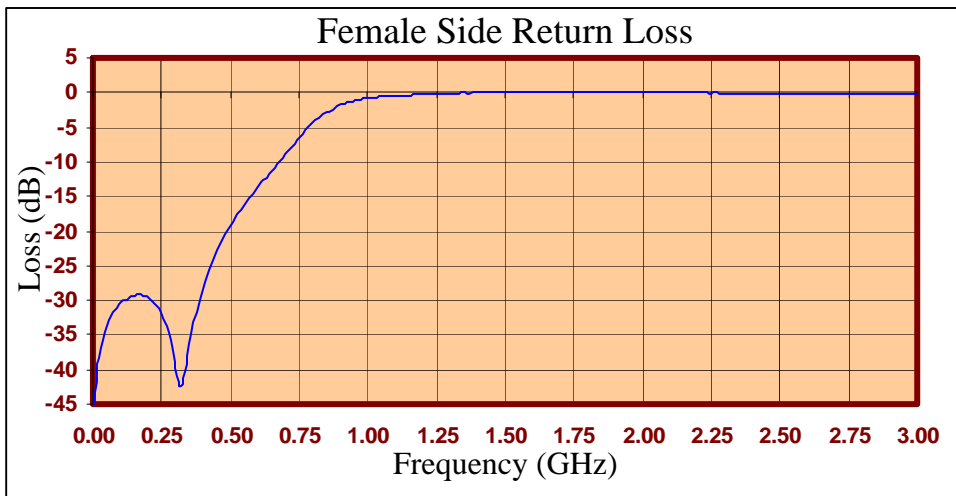
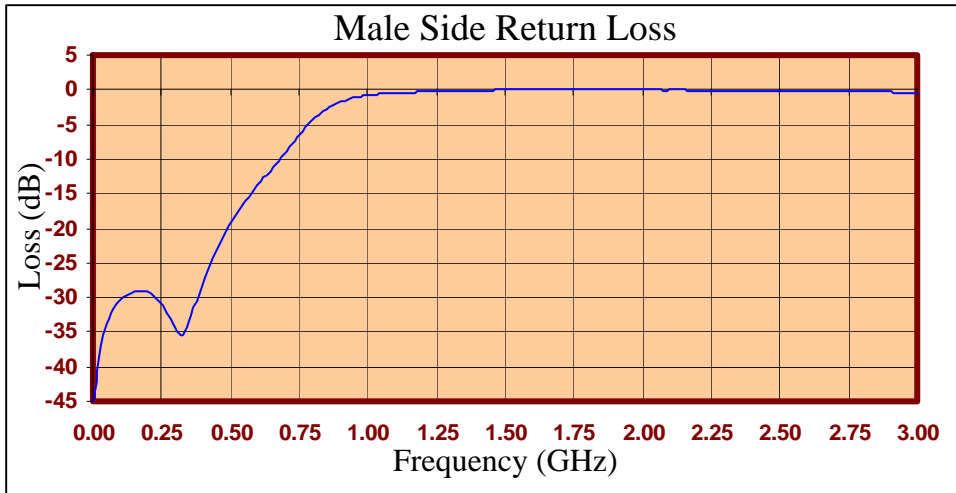
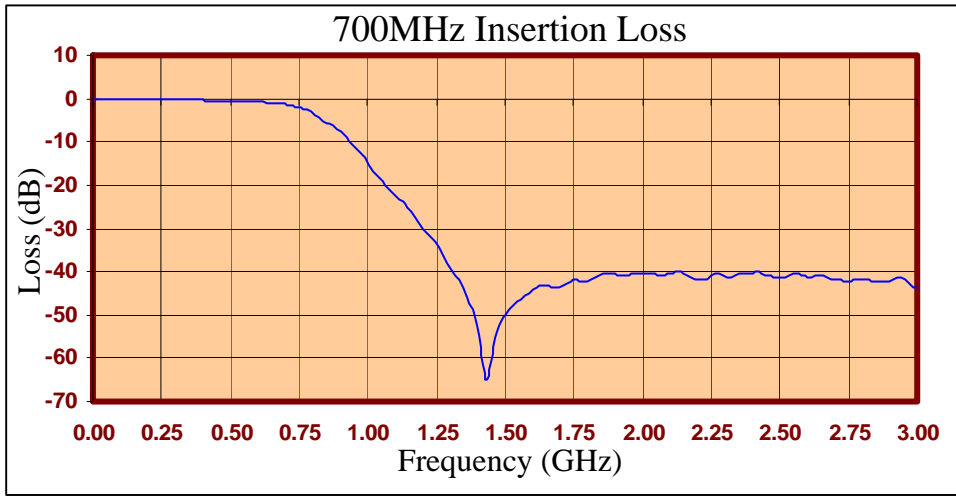
- Test Equipment
- Lab Use

Maximum Ratings:

- +36dBm (4 Watts)
- Operating Temperature: -40°C to 85°C
- Storage Temperature: -55°C to 100°C



Crystek's new line of Low Pass Filters are designed in a rugged SMA housing. This filter line has excellent out-of-band rejection. Designed for Test Equipment and General Lab Use.





FREQ (MHz)	INSERTION LOSS (dB)	Male Return Loss (dB)	Female Return Loss (dB)
0.3	-0.04	-46.40	-46.37
15.3	-0.05	-40.77	-40.44
30.3	-0.11	-36.97	-36.96
45.3	-0.10	-34.71	-34.56
60.3	-0.13	-33.06	-32.93
75.3	-0.13	-31.82	-31.69
90.3	-0.18	-30.92	-31.03
105	-0.15	-30.22	-30.19
120	-0.16	-29.65	-29.86
135	-0.16	-29.37	-29.46
150	-0.21	-29.12	-29.31
165	-0.21	-28.97	-29.15
180	-0.24	-28.97	-29.41
195	-0.23	-29.21	-29.53
210	-0.22	-29.50	-29.83
225	-0.24	-29.83	-30.56
240	-0.25	-30.52	-31.20
255	-0.26	-31.22	-32.43
270	-0.27	-32.25	-33.87
285	-0.26	-33.25	-35.76
300	-0.27	-34.28	-38.87
330	-0.30	-35.38	-42.16
405	-0.36	-27.06	-27.30
450	-0.41	-22.91	-22.85
510	-0.51	-18.75	-18.59
585	-0.69	-14.66	-14.53
705	-1.39	-8.77	-8.73
810	-3.85	-4.05	-4.08
900	-7.78	-1.74	-1.76
1005	-15.49	-0.78	-0.77
1245	-33.66	-0.24	-0.20
1500	-48.67	-0.05	0.00
1755	-41.69	-0.02	0.00
1995	-40.50	-0.04	0.00
2250	-41.14	-0.08	-0.07
2505	-41.63	-0.19	-0.16
2745	-42.74	-0.29	-0.24
3000	-44.32	-0.39	-0.31

Product Control:

Crystek Part Number:	CLPFL-0700	Release Date:	09-Jun-10
Revision Level:	A	Responsible:	K. Piotrowicz

