

CEL

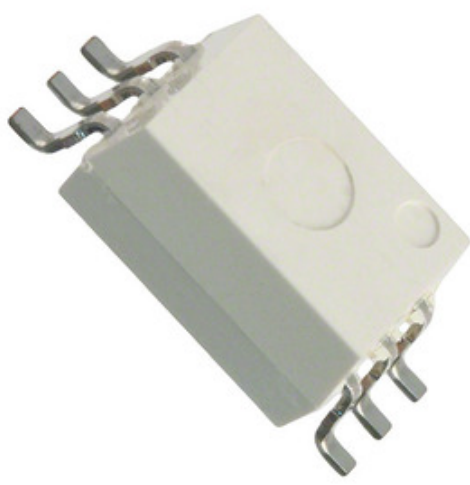
CEL (California Eastern Laboratories)

PS9303L-AX

Nomor bagian:	PS9303L-AX
Pabrikan / Merek:	CEL (California Eastern Laboratories)
Deskripsi Produk	OPTOISO 5KV PUSH PULL 6DIP GW 1.PS9303L-AX.pdf 2.PS9303L-AX.pdf 3.PS9303L-AX.pdf 4.PS9303L-AX.pdf
Lembar data:	
Status RoHS	Bebas timah / Sesuai RoHS
Kondisi stok	23253 pcs stock
Kirim Dari	Hongkong
Cara pengiriman	DHL/Fedex/TNT/UPS/EMS

PERMINTAAN KUTIPAN

Laboratories)



Gambar bisa berupa representasi. Lihat spesifikasi untuk detail produk.

Spesifikasi PS9303L-AX

NOMOR BAGIAN	PS9303L-AX
PABRIKAN	CEL (California Eastern Laboratories)
DESKRIPSI	OPTOISO 5KV PUSH PULL 6DIP GW
MEMIMPIN STATUS BEBAS / STATUS ROHS	Bebas timah / Sesuai RoHS
JUMLAH YANG TERSEDIA	23253 pcs
LEMBARAN DATA	1.PS9303L-AX.pdf 2.PS9303L-AX.pdf 3.PS9303L-AX.pdf 4.PS9303L-AX.pdf
TEGANGAN - PASOKAN	4.5 V ~ 20 V
TEGANGAN - ISOLASI	5000Vrms
TEGANGAN - TERUSKAN (VF) (TYP)	1.6V
PAKET PERANGKAT PEMASOK	6-SMD
SERI	NEPOC
RISE / FALL TIME (TYP)	120ns, 90ns
DELAY PROPAGASI TPLH / TPHL (MAX)	500ns, 550ns
PENGEMASAN	Bulk
PAKET / CASE	6-SOIC (0.268", 6.80mm Width)
OUTPUT TYPE	Push-Pull, Totem Pole
NAMA LAIN	PS9303LAX
SUHU OPERASIONAL	-40°C ~ 100°C
JUMLAH SALURAN	1
MOUNT JENIS	Surface Mount
MOISTURE SENSITIVITY LEVEL (MSL)	1 (Unlimited)
STATUS GRATIS MEMIMPIN / STATUS ROHS	Lead free / RoHS Compliant
INPUT - SIDE 1 / SIDE 2	1/0
TIPE MASUKAN	DC
DETIL DESKRIPSI	Logic Output Optoisolator 1Mbps Push-Pull, Totem Pole 5000Vrms 1 Channel 15kV/μs CMTI 6-SMD
DATA RATE	1Mbps
SAAT INI - OUTPUT / KANAL	25mA
CURRENT - DC FORWARD (JIKA) (MAX)	20mA
COMMON MODE IMUNITAS TRANSIEN (MIN)	15kV/μs

Tag terkait

CEL (California Eastern Laboratories) PS9303L-AX	Distributor PS9303L-AX	Pemasok PS9303L-AX
Harga PS9303L-AX	Gambar PS9303L-AX	Gambar PS9303L-AX
Lembar Data PDF PS9303L-AX	PS9303L-AX Unduh Lembar Data	Lembar Data PS9303L-AX
Stok PS9303L-AX	Beli PS9303L-AX	Beli CEL (California Eastern Laboratories) PS9303L-AX
CEL (California Eastern Laboratories) PS9303L-AX	Pemasok CEL (California Eastern Laboratories)	Distributor CEL (California Eastern Laboratories)
CEL (California Eastern Laboratories) PS9303L-AX	California Eastern Labs PS9303L-AX	California Eastern Laboratories PS9303L-AX
CEL PS9303L-AX	CEL (California Eastern Laboratories) PS9303L-AX	

Produk-produk terkait

<p>PS92D05S Produsen: C&K Deskripsi: SWITCH PUSHBUTTON Persediaan: 129283 pcs RFQ</p>	<p>PS9303L-V E3-AX Produsen: Renesas Electronics America Deskripsi: OPTOISO 5KV PUSH PULL 6DIP GW Persediaan: 48746 pcs RFQ</p>
<p>PS9213-F3-A Produsen: CEL (California Eastern Laboratories) Deskripsi: OPTOISO 2.5KV OPN COLLECTOR 5SOP Persediaan: 6670 pcs RFQ</p>	<p>PS9303L-V-AX Produsen: Renesas Electronics America Deskripsi: OPTOISO 5KV PUSH PULL 6DIP GW Persediaan: 31751 pcs RFQ</p>
<p>PS9303L-E3-AX Produsen: Renesas Electronics America Deskripsi: OPTOISO 5KV PUSH PULL 6DIP GW Persediaan: 47080 pcs RFQ</p>	<p>PS9213-A Produsen: CEL (California Eastern Laboratories) Deskripsi: OPTOISO 2.5KV OPN COLLECTOR 5SOP Persediaan: 2944 pcs RFQ</p>
<p>PS9303L-V-AX Produsen: CEL (California Eastern Laboratories) Deskripsi: OPTOISO 5KV PUSH PULL 6DIP GW Persediaan: 5483 pcs RFQ</p>	<p>PS9214-F3-A Produsen: CEL (California Eastern Laboratories) Deskripsi: OPTOISO 2.5KV OPN COLLECTOR 5SOP Persediaan: 2845 pcs RFQ</p>
<p>PS9303L-E3-AX Produsen: CEL (California Eastern Laboratories) Deskripsi: OPTOISO 5KV PUSH PULL 6DIP GW Persediaan: 5370 pcs RFQ</p>	<p>PS9214-A Produsen: CEL (California Eastern Laboratories) Deskripsi: OPTOISO 2.5KV OPN COLLECTOR 5SOP Persediaan: 5068 pcs RFQ</p>
<p>PS92D05NS Produsen: C&K Deskripsi: SWITCH PUSHBUTTON Persediaan: 119711 pcs RFQ</p>	<p>PS9303L-V E3-AX Produsen: CEL (California Eastern Laboratories) Deskripsi: OPTOISO 5KV PUSH PULL 6DIP GW Persediaan: 5368 pcs RFQ</p>

