

**CEL**

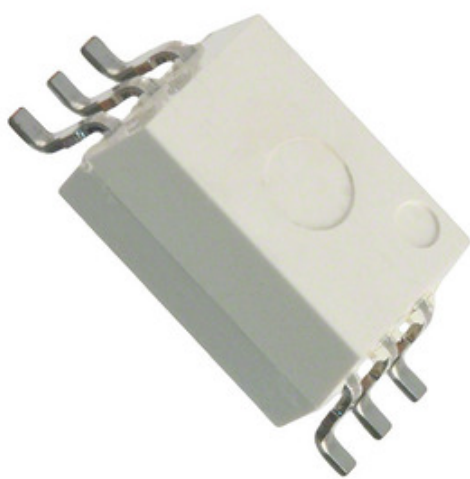
CEL (California Eastern Laboratories)

### PS9307L2-E3-AX

Nomor bagian:	PS9307L2-E3-AX
Pabrikan / Merek:	CEL (California Eastern Laboratories)
Deskripsi Produk	OPTOISO 5KV 1CH GATE DRIVER 6SMD
Lembar data:	<a href="#">1.PS9307L2-E3-AX.pdf</a> <a href="#">2.PS9307L2-E3-AX.pdf</a> <a href="#">3.PS9307L2-E3-AX.pdf</a> <a href="#">4.PS9307L2-E3-AX.pdf</a>
Status RoHS	Bebas timah / Sesuai RoHS
Kondisi stok	2851 pcs stock
Kirim Dari	Hongkong
Cara pengiriman	DHL/Fedex/TNT/UPS/EMS

**PERMINTAAN KUTIPAN**

**Laboratories)**



Gambar bisa berupa representasi. Lihat spesifikasi untuk detail produk.

#### Spesifikasi PS9307L2-E3-AX

NOMOR BAGIAN	PS9307L2-E3-AX
PABRIKAN	CEL (California Eastern Laboratories)
DESKRIPSI	OPTOISO 5KV 1CH GATE DRIVER 6SMD
MEMIMPIN STATUS BEBAS / STATUS ROHS	Bebas timah / Sesuai RoHS
JUMLAH YANG TERSEDIA	2851 pcs
LEMBARAN DATA	<a href="#">1.PS9307L2-E3-AX.pdf</a> <a href="#">2.PS9307L2-E3-AX.pdf</a> <a href="#">3.PS9307L2-E3-AX.pdf</a> <a href="#">4.PS9307L2-E3-AX.pdf</a>
TEGANGAN - PASOKAN	10 V ~ 30 V
TEGANGAN - ISOLASI	5000Vrms
TEGANGAN - TERUSKAN (VF) (TYP)	1.56V
TEKNOLOGI	Optical Coupling
PAKET PERANGKAT PEMASOK	-
SERI	NEPOC
RISE / FALL TIME (TYP)	30ns, 30ns
DISTORSI LEBAR PULSA (MAX)	90ns
DELAY PROPAGASI TPLH / TPHL (MAX)	175ns, 175ns
PENGEMASAN	Tape & Reel (TR)
PAKET / CASE	6-SOIC (0.268", 6.80mm Width)
NAMA LAIN	PS9307L2-E3-AXTR
SUHU OPERASIONAL	-40°C ~ 125°C
JUMLAH SALURAN	1
MOUNT JENIS	Surface Mount
MOISTURE SENSITIVITY LEVEL (MSL)	1 (Unlimited)
STATUS GRATIS MEMIMPIN / STATUS ROHS	Lead free / RoHS Compliant
DETIL DESKRIPSI	600mA Gate Driver Optical Coupling 5000Vrms 1 Channel
SAAT INI - PUNCAK OUTPUT	600mA
SAAT INI - OUTPUT TINGGI, RENDAH	400mA, 400mA
CURRENT - DC FORWARD (JIKA) (MAX)	25mA
COMMON MODE IMUNITAS TRANSIEN (MIN)	50kV/µs
PERSETUJUAN	CSA, SEMKO, UL

#### Tag terkait

CEL (California Eastern Laboratories) PS9307L2-E3-AX	Distributor PS9307L2-E3-AX	Pemasok PS9307L2-E3-AX
Harga PS9307L2-E3-AX	Gambar PS9307L2-E3-AX	Gambar PS9307L2-E3-AX
Lembar Data PDF PS9307L2-E3-AX	PS9307L2-E3-AX Unduh Lembar Data	Lembar Data PS9307L2-E3-AX
Stok PS9307L2-E3-AX	Beli PS9307L2-E3-AX	Beli CEL (California Eastern Laboratories) PS9307L2-E3-AX
CEL (California Eastern Laboratories) PS9307L2-E3-AX	Pemasok CEL (California Eastern Laboratories)	Distributor CEL (California Eastern Laboratories)
CEL (California Eastern Laboratories) PS9307L2-E3-AX	California Eastern Labs PS9307L2-E3-AX	California Eastern Laboratories PS9307L2-E3-AX
CEL PS9307L2-E3-AX	CEL (California Eastern Laboratories) PS9307L2-E3-AX	

#### Produk-produk terkait

<p><b>PS9307L-V-E3-AX</b>                  Produsen: Renesas Electronics America                  Deskripsi: OPTOISO 5KV 1CH GATE DRVR 6SDIP                  Persediaan: 58702 pcs  <a href="#">RFQ</a></p>	<p><b>PS9308L-V-AX</b>                  Produsen: CEL (California Eastern Laboratories)                  Deskripsi: OPTOISO 5KV 1CH GATE DRVR 6SDIP                  Persediaan: 4377 pcs  <a href="#">RFQ</a></p>
<p><b>PS9307L2-E3-AX</b>                  Produsen: Renesas Electronics America                  Deskripsi: OPTOISO 5KV 1CH GATE DRIVER 6SMD                  Persediaan: 44700 pcs  <a href="#">RFQ</a></p>	<p><b>PS9308L-AX</b>                  Produsen: Renesas Electronics America                  Deskripsi: OPTOISO 5KV 1CH GATE DRVR 6SDIP                  Persediaan: 44861 pcs  <a href="#">RFQ</a></p>
<p><b>PS9308L-E3-AX</b>                  Produsen: Renesas Electronics America                  Deskripsi: OPTOISO 5KV 1CH GATE DRVR 6SDIP                  Persediaan: 73506 pcs  <a href="#">RFQ</a></p>	<p><b>PS9307L2-AX</b>                  Produsen: CEL (California Eastern Laboratories)                  Deskripsi: OPTOISO 5KV 1CH GATE DRIVER 6SMD                  Persediaan: 5587 pcs  <a href="#">RFQ</a></p>
<p><b>PS9308L-E3-AX</b>                  Produsen: CEL (California Eastern Laboratories)                  Deskripsi: OPTOISO 5KV 1CH GATE DRVR 6SDIP                  Persediaan: 6602 pcs  <a href="#">RFQ</a></p>	<p><b>PS9308L-AX</b>                  Produsen: CEL (California Eastern Laboratories)                  Deskripsi: OPTOISO 5KV 1CH GATE DRVR 6SDIP                  Persediaan: 3645 pcs  <a href="#">RFQ</a></p>
<p><b>PS9307L-E3-AX</b>                  Produsen: Renesas Electronics America                  Deskripsi: OPTOISO 5KV 1CH GATE DRVR 6SDIP                  Persediaan: 50874 pcs  <a href="#">RFQ</a></p>	<p><b>PS9307L2-AX</b>                  Produsen: Renesas Electronics America                  Deskripsi: OPTOISO 5KV 1CH GATE DRIVER 6SMD                  Persediaan: 33367 pcs  <a href="#">RFQ</a></p>
<p><b>PS9307L-V-E3-AX</b>                  Produsen: CEL (California Eastern Laboratories)                  Deskripsi: OPTOISO 5KV 1CH GATE DRVR 6SDIP                  Persediaan: 3269 pcs  <a href="#">RFQ</a></p>	<p><b>PS9308L-V-AX</b>                  Produsen: Renesas Electronics America                  Deskripsi: OPTOISO 5KV 1CH GATE DRVR 6SDIP                  Persediaan: 47548 pcs  <a href="#">RFQ</a></p>

